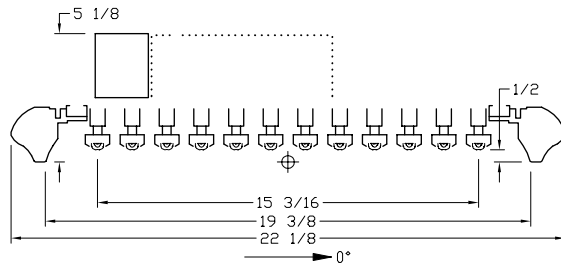


itl boulder
 THE LIGHT CENTER OF THE INDUSTRY SINCE 1955

INDEPENDENT TESTING LABORATORIES, INC.
 3386 LONGHORN ROAD, BOULDER, CO 80302 USA

PHONE: (303)442-1255 • FAX: (303)449-5274 • E-MAIL: itl@itlboulder.com • WEBSITE: www.itlboulder.com

ISOFOOTCANDLE LINES OF HORIZONTAL ILLUMINATION
 Values based on 20 foot mounting height.

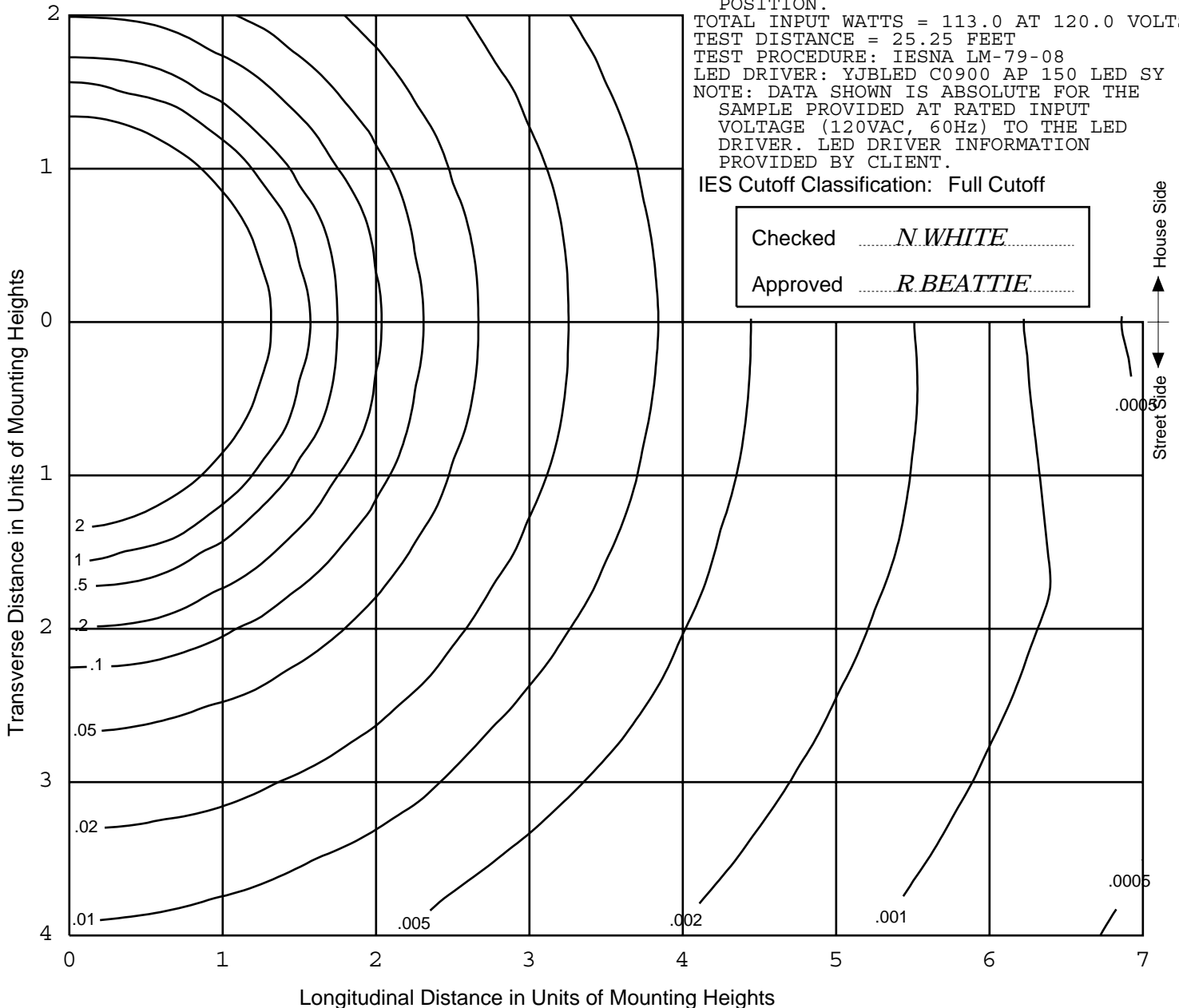


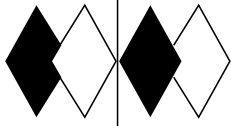
REPORT NUMBER: ITL61362
 DATE: 11/25/08
 PREPARED FOR: YJBLED
 CATALOG NUMBER: 200120WL
 LUMINAIRE: EXTRUDED DIFFUSE METAL FRAME WITH CAST SEMI-DIFFUSE METAL CORNERS, FORMED PERFORATED METAL TOP CAGE, TWELVE CAST METAL HEAT SINKS, EACH HEAT SINK HAS TEN LED MODULES, EACH LED MODULE CONTAINS: CAST FINNED METAL BODY, ONE CIRCUIT BOARD WITH ONE LED, CLEAR SEMI-HEMISPHERICAL PLASTIC LENS WITH RECESSED BOTTOM AND CYLINDRICAL SIDES.
 LAMP: ONE HUNDRED TWENTY 1-WATT WHITE MULTI-CHIP LIGHT EMITTING DIODES (LEDS) EACH WITH CLEAR HEMISPHERICAL INTEGRAL LENS, VERTICAL BASE-UP POSITION.

TOTAL INPUT WATTS = 113.0 AT 120.0 VOLTS
 TEST DISTANCE = 25.25 FEET
 TEST PROCEDURE: IESNA LM-79-08
 LED DRIVER: YJBLED C0900 AP 150 LED SY
 NOTE: DATA SHOWN IS ABSOLUTE FOR THE SAMPLE PROVIDED AT RATED INPUT VOLTAGE (120VAC, 60Hz) TO THE LED DRIVER. LED DRIVER INFORMATION PROVIDED BY CLIENT.

IES Cutoff Classification: Full Cutoff

Checked *N. WHITE*
 Approved *R. BEATTIE*





REPORT NUMBER: ITL61362

DATE: 11/25/08

PREPARED FOR: YJBLED

CATALOG NUMBER: 200120WL

LUMINAIRE: EXTRUDED DIFFUSE METAL

FRAME WITH CAST SEMI-DIFFUSE METAL CORNERS, FORMED PERFORATED METAL TOP CAGE, TWELVE CAST METAL HEAT SINKS, EACH HEAT SINK HAS TEN LED MODULES, EACH LED MODULE CONTAINS: CAST FINNED METAL BODY, ONE CIRCUIT BOARD WITH ONE LED, CLEAR SEMI-HEMISPHERICAL PLASTIC LENS WITH RECESSED BOTTOM AND CYLINDRICAL SIDES.

LAMP: ONE HUNDRED TWENTY 1-WATT WHITE MULTI-CHIP LIGHT EMITTING DIODES (LEDS) EACH WITH CLEAR HEMISPHERICAL INTEGRAL LENS, VERTICAL BASE-UP POSITION.

TOTAL INPUT WATTS = 113.0 AT 120.0 VOLTS

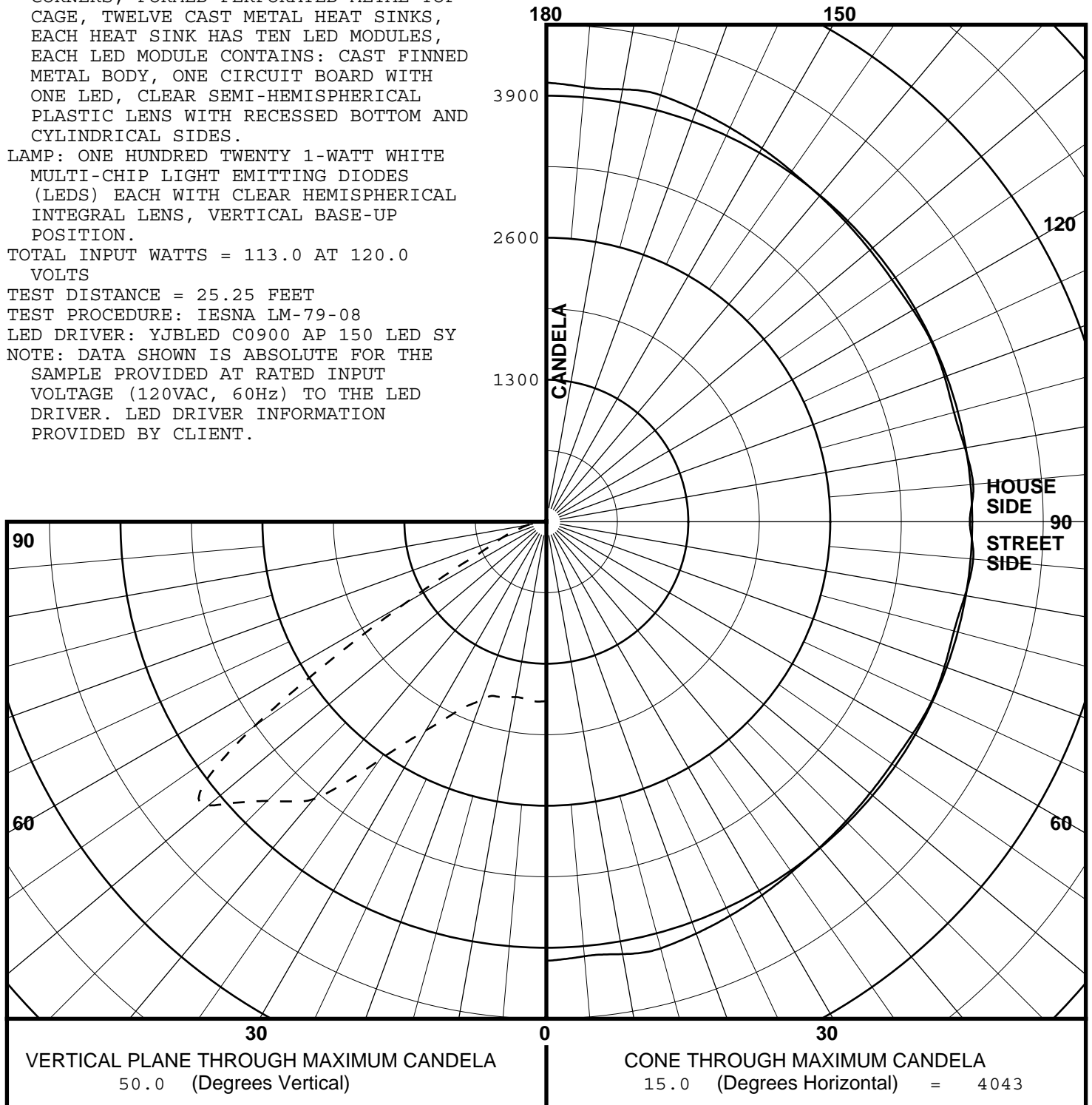
TEST DISTANCE = 25.25 FEET

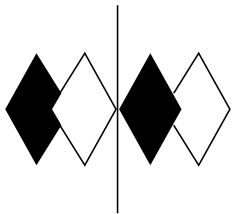
TEST PROCEDURE: IESNA LM-79-08

LED DRIVER: YJBLED C0900 AP 150 LED SY

NOTE: DATA SHOWN IS ABSOLUTE FOR THE SAMPLE PROVIDED AT RATED INPUT VOLTAGE (120VAC, 60Hz) TO THE LED DRIVER. LED DRIVER INFORMATION PROVIDED BY CLIENT.

MAXIMUM PLANE AND MAXIMUM CONE PLOTS OF CANDELA

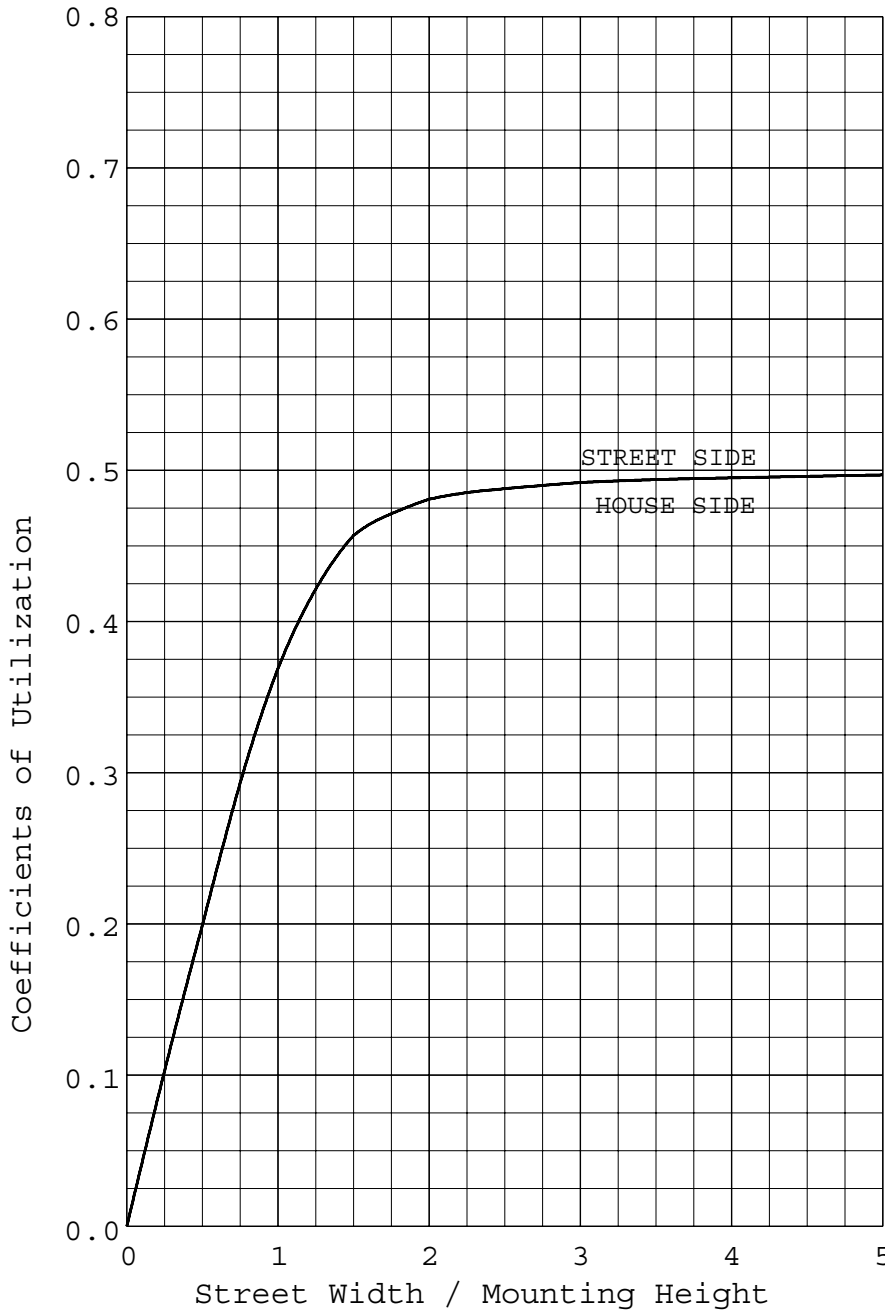




REPORT NUMBER: ITL61362
 PREPARED FOR: YJBLED

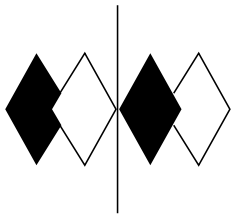
DATE: 11/25/08

COEFFICIENTS OF UTILIZATION AND FLUX DISTRIBUTION



	LUMENS	PERCENT OF FIXTURE
DOWNWARD STREET SIDE	4971	50.0
DOWNWARD HOUSE SIDE	4971	50.0
DOWNWARD TOTAL	9942	100.0
UPWARD STREET SIDE	0	0.0
UPWARD HOUSE SIDE	0	0.0
UPWARD TOTAL	0	0.0
TOTAL FLUX	9942	100.0
EFFICACY = 88.0 Lm/W		

ALL CANDELA AND LUMENS IN THIS REPORT ARE BASED ON ABSOLUTE PHOTOMETRY. THE COEFFICIENT OF UTILIZATION VALUES ARE BASED ON THE TOTAL ABSOLUTE LUMEN OUTPUT OF THIS LUMINAIRE SAMPLE.



itl boulder
THE LIGHT CENTER OF THE INDUSTRY SINCE 1955

INDEPENDENT TESTING LABORATORIES, INC.
3386 LONGHORN ROAD, BOULDER, CO 80302 USA

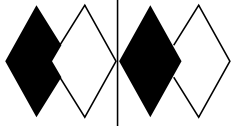
PHONE: (303)442-1255 • FAX: (303)449-5274 • E-MAIL: itl@itlboulder.com • WEBSITE: www.itlboulder.com

REPORT NUMBER: ITL61362
DATE: 11/25/08
PREPARED FOR: YJBLED

FLUX DISTRIBUTION BY SOLID ANGLE

(PER IESNA TM-15-07, LUMINAIRE CLASSIFICATION
SYSTEM FOR OUTDOOR LUMINAIRES)

	LUMENS	PERCENT OF FIXTURE
FORWARD LIGHT	4971.	50.0
FL (0- 30)		7.8
FM (30- 60)		36.4
FH (60- 80)		5.5
FVH(80- 90)		0.3
BACK LIGHT	4971.	50.0
BL (0- 30)		7.8
BM (30- 60)		36.4
BH (60- 80)		5.5
BVH(80- 90)		0.3
UPLIGHT	0.	0.0
UL (90-100)		0.0
UH (100-180)		0.0
TRAPPED LIGHT	0.	0.0
TOTAL FLUX	9942.	100.0



itl boulder

THE LIGHT CENTER OF THE INDUSTRY SINCE 1955

INDEPENDENT TESTING LABORATORIES, INC.
3386 LONGHORN ROAD, BOULDER, CO 80302 USA

PHONE: (303)442-1255 • FAX: (303)449-5274 • E-MAIL: itl@itlboulder.com • WEBSITE: www.itlboulder.com

REPORT NUMBER: ITL61362
PREPARED FOR: YJBLED

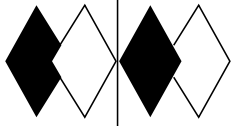
DATE: 11/25/08

CANDELA TABULATION

	STREET SIDE			LATERAL ANGLE							
	0.0	5.0	15.0	25.0	35.0	45.0	55.0	65.0	75.0	85.0	90.0
	90.0	0.	0.	0.	0.	0.	0.	0.	0.	0.	0.
	87.5	8.	9.	25.	13.	11.	8.	9.	7.	5.	4.
	85.0	26.	34.	83.	71.	59.	50.	61.	62.	58.	19.
	82.5	115.	132.	135.	113.	104.	105.	101.	102.	102.	46.
	80.0	177.	175.	171.	160.	146.	144.	141.	141.	144.	140.
	77.5	228.	224.	216.	205.	188.	192.	199.	191.	185.	183.
	75.0	273.	270.	267.	261.	272.	253.	255.	258.	259.	258.
	72.5	344.	348.	352.	347.	347.	347.	326.	329.	330.	330.
	70.0	436.	435.	432.	442.	447.	452.	436.	428.	428.	428.
V	67.5	530.	535.	527.	548.	559.	564.	583.	573.	555.	547.
E	65.0	649.	654.	659.	674.	696.	707.	726.	737.	751.	741.
R	62.5	973.	972.	995.	998.	1021.	1037.	1042.	1078.	1089.	1108.
T	60.0	1450.	1449.	1490.	1515.	1545.	1577.	1596.	1657.	1665.	1693.
I	57.5	2297.	2278.	2284.	2346.	2346.	2368.	2404.	2437.	2429.	2418.
C	55.0	3359.	3342.	3266.	3277.	3239.	3191.	3176.	3131.	3152.	3131.
A	52.5	4034.	4006.	3961.	3869.	3828.	3710.	3672.	3602.	3626.	3649.
L	50.0<<	4020.	3993.	4043.	3980.	3916.	3879.	3864.	3892.	3865.	3924.
	47.5	3746.	3744.	3803.	3816.	3808.	3886.	3891.	3934.	3971.	3928.
A	45.0	3603.	3636.	3614.	3618.	3684.	3745.	3747.	3768.	3792.	3789.
N	42.5	3509.	3528.	3473.	3475.	3479.	3466.	3481.	3479.	3482.	3522.
G	40.0	3335.	3313.	3315.	3272.	3201.	3159.	3161.	3164.	3150.	3179.
L	37.5	3043.	3004.	2997.	2970.	2910.	2878.	2881.	2870.	2879.	2887.
E	35.0	2708.	2677.	2662.	2671.	2647.	2634.	2635.	2638.	2642.	2662.
	32.5	2390.	2420.	2398.	2380.	2416.	2421.	2426.	2441.	2451.	2453.
	30.0	2177.	2202.	2204.	2199.	2205.	2235.	2229.	2248.	2264.	2264.
	27.5	2037.	2034.	2049.	2067.	2029.	2074.	2082.	2077.	2124.	2112.
	25.0	1944.	1902.	1903.	1936.	1917.	1933.	1959.	1946.	1978.	1987.
	22.5	1812.	1796.	1811.	1827.	1831.	1820.	1854.	1860.	1849.	1871.
	20.0	1704.	1740.	1737.	1743.	1751.	1759.	1759.	1784.	1776.	1773.
	17.5	1661.	1679.	1672.	1680.	1681.	1695.	1686.	1699.	1720.	1695.
	15.0	1651.	1653.	1660.	1651.	1643.	1645.	1659.	1662.	1671.	1669.
	12.5	1636.	1631.	1644.	1624.	1647.	1635.	1653.	1646.	1638.	1662.
	10.0	1640.	1623.	1630.	1630.	1633.	1640.	1639.	1625.	1625.	1640.
	7.5	1621.	1630.	1630.	1644.	1629.	1640.	1629.	1638.	1644.	1633.
	5.0	1646.	1641.	1643.	1644.	1638.	1647.	1633.	1641.	1644.	1638.
	2.5	1663.	1646.	1648.	1638.	1645.	1638.	1643.	1645.	1648.	1649.
	0.0	1643.	1643.	1643.	1643.	1643.	1643.	1643.	1643.	1643.	1643.

||
PLANE OF MAXIMUM CANDELA

||
CONE OF MAXIMUM CANDELA



itl boulder

THE LIGHT CENTER OF THE INDUSTRY SINCE 1955

INDEPENDENT TESTING LABORATORIES, INC.
3386 LONGHORN ROAD, BOULDER, CO 80302 USA

PHONE: (303)442-1255 • FAX: (303)449-5274 • E-MAIL: itl@itlboulder.com • WEBSITE: www.itlboulder.com

REPORT NUMBER: ITL61362
PREPARED FOR: YJBLED

DATE: 11/25/08

CANDELA TABULATION

	HOUSE SIDE		LATERAL ANGLE							
	95.0	105.0	115.0	125.0	135.0	145.0	155.0	165.0	175.0	180.0
	90.0	0.	0.	0.	0.	0.	0.	0.	0.	0.
	87.5	4.	5.	7.	9.	8.	11.	13.	25.	9.
	85.0	19.	58.	62.	61.	50.	59.	71.	83.	34.
	82.5	46.	102.	102.	101.	105.	104.	113.	135.	132.
	80.0	140.	144.	141.	141.	144.	146.	160.	171.	175.
	77.5	183.	185.	191.	199.	192.	188.	205.	216.	224.
	75.0	258.	259.	258.	255.	253.	272.	261.	267.	270.
	72.5	330.	330.	329.	326.	347.	347.	347.	352.	348.
	70.0	428.	428.	428.	436.	452.	447.	442.	432.	435.
V	67.5	547.	555.	573.	583.	564.	559.	548.	527.	535.
E	65.0	741.	751.	737.	726.	707.	696.	674.	659.	654.
R	62.5	1108.	1089.	1078.	1042.	1037.	1021.	998.	995.	972.
T	60.0	1693.	1665.	1657.	1596.	1577.	1545.	1515.	1490.	1449.
I	57.5	2418.	2429.	2437.	2404.	2368.	2346.	2346.	2284.	2278.
C	55.0	3131.	3152.	3131.	3176.	3191.	3239.	3277.	3266.	3342.
A	52.5	3649.	3626.	3602.	3672.	3710.	3828.	3869.	3961.	4006.
L	50.0<<	3924.	3865.	3892.	3864.	3879.	3916.	3980.	4043.	3993.
	47.5	3928.	3971.	3934.	3891.	3886.	3808.	3816.	3803.	3744.
A	45.0	3789.	3792.	3768.	3747.	3745.	3684.	3618.	3614.	3636.
N	42.5	3522.	3482.	3479.	3481.	3466.	3479.	3475.	3473.	3528.
G	40.0	3179.	3150.	3164.	3161.	3159.	3201.	3272.	3315.	3313.
L	37.5	2887.	2879.	2870.	2881.	2878.	2910.	2970.	2997.	3004.
E	35.0	2662.	2642.	2638.	2635.	2634.	2647.	2671.	2662.	2677.
	32.5	2453.	2451.	2441.	2426.	2421.	2416.	2380.	2398.	2420.
	30.0	2264.	2264.	2248.	2229.	2235.	2205.	2199.	2204.	2202.
	27.5	2112.	2124.	2077.	2082.	2074.	2029.	2067.	2049.	2034.
	25.0	1987.	1978.	1946.	1959.	1933.	1917.	1936.	1903.	1902.
	22.5	1871.	1849.	1860.	1854.	1820.	1831.	1827.	1811.	1796.
	20.0	1773.	1776.	1784.	1759.	1759.	1751.	1743.	1737.	1740.
	17.5	1695.	1720.	1699.	1686.	1695.	1681.	1680.	1672.	1679.
	15.0	1669.	1671.	1662.	1659.	1645.	1643.	1651.	1660.	1653.
	12.5	1662.	1638.	1646.	1653.	1635.	1647.	1624.	1644.	1631.
	10.0	1640.	1625.	1625.	1639.	1640.	1633.	1630.	1630.	1623.
	7.5	1633.	1644.	1638.	1629.	1640.	1629.	1644.	1630.	1630.
	5.0	1638.	1644.	1641.	1633.	1647.	1638.	1644.	1643.	1641.
	2.5	1649.	1648.	1645.	1643.	1638.	1645.	1638.	1648.	1646.
	0.0	1643.	1643.	1643.	1643.	1643.	1643.	1643.	1643.	1643.

CONE OF MAXIMUM CANDELA